

# STRATEGIC 2020 VISION

# VISION

Embracing Today - Inspiring Tomorrow



# MISSION

Arlington Heights School District 25 cultivates innovative learners within a nurturing and collaborative community to thrive in an ever changing world.

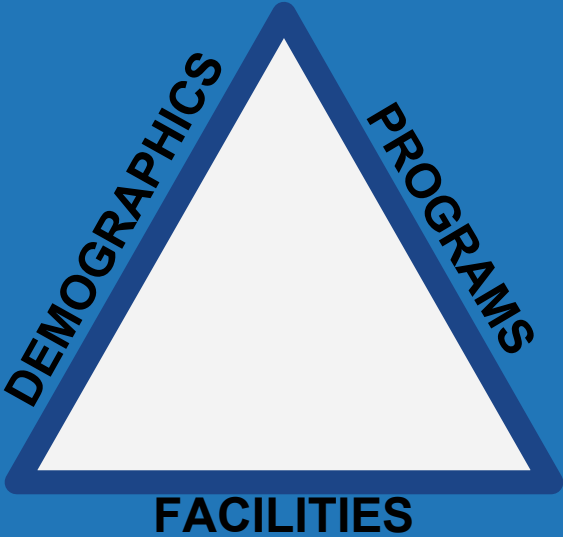
# BROAD GOALS

## STRATEGIC 2020 VISION



1. BROADEN BEST PRACTICES
2. EXPLORE PROGRAM EXPANSION
3. STRENGTHEN COMMUNITY RELATIONS
4. ENHANCE STAFF SUPPORT
5. MAINTAIN & ENHANCE HIGH QUALITY FACILITIES

# 5.A) Establish Process to annually evaluate district space needs



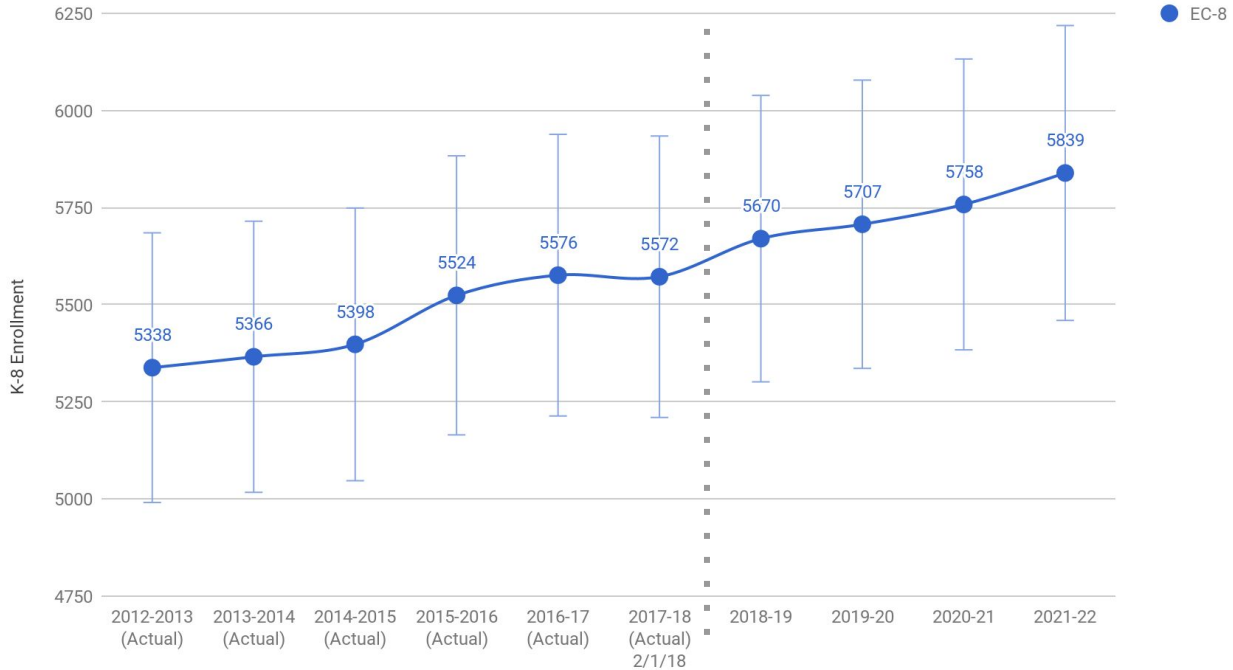
# Facilities

## Portfolio Gross Building Square Footage

	'15 - '16	'16 - '17	'17 - '18	'18 - '19
<b>Rand Rental Facility</b>	83,000	83,000	83,000	83,000
<b>Miner Rental Facility</b>	79,000	79,000	79,000	79,000
<b>Dunton Administration Building</b>	32,000	32,000	32,000	32,000
<b>Greenbrier Elementary School</b>	58,207	58,207	58,207	66,585
<b>Patton Elementary School</b>	54,934	54,934	54,934	54,934
<b>Dryden Elementary School</b>	61,101	61,101	61,101	61,101
<b>Olive-Mary Stitt Elementary School</b>	62,643	83,293	83,293	83,293
<b>Windsor Elementary School</b>	68,346	68,346	80,602	80,602
<b>Ivy Hill Elementary School</b>	60,388	77,088	77,088	77,088
<b>Westgate Elementary School</b>	74,000	74,000	74,000	74,000
<b>South Middle School</b>	146,013	146,013	146,013	146,013
<b>Thomas Middle School</b>	124,000	124,000	144,270	144,270
<b>District Gross sf Total</b>	<b>903,632</b>	<b>940,982</b>	<b>973,508</b>	<b>981,886</b>

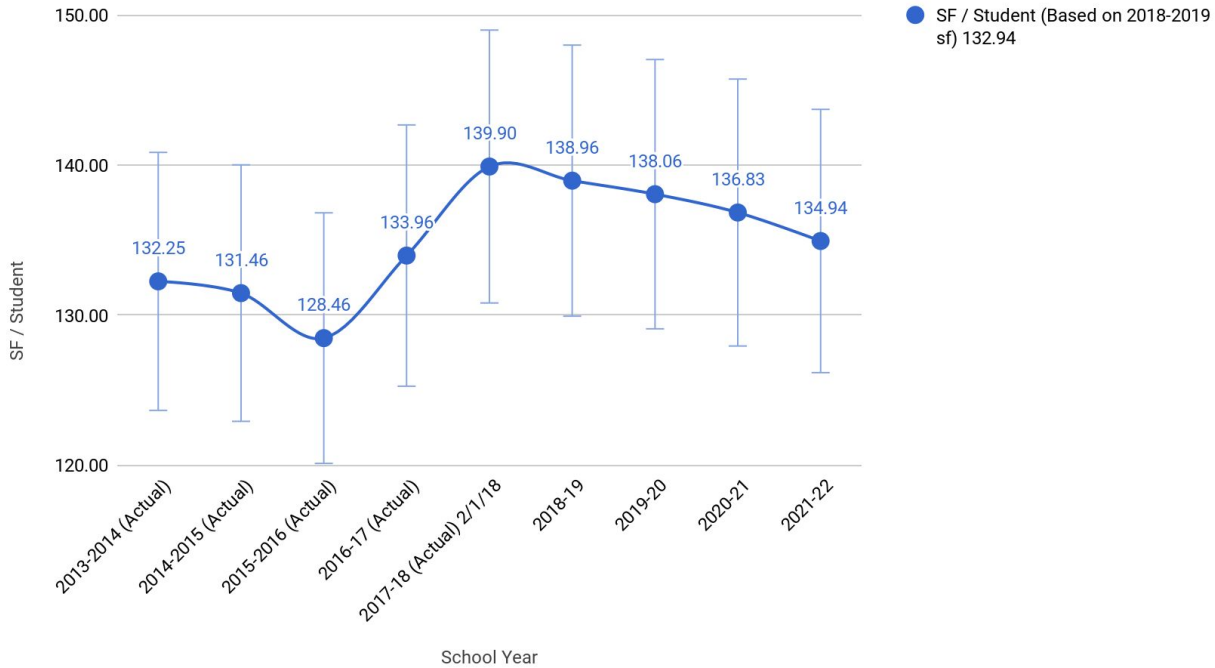
# Demographics

### EC-8 Enrollment Projections - Series B (w/ Error Bars)

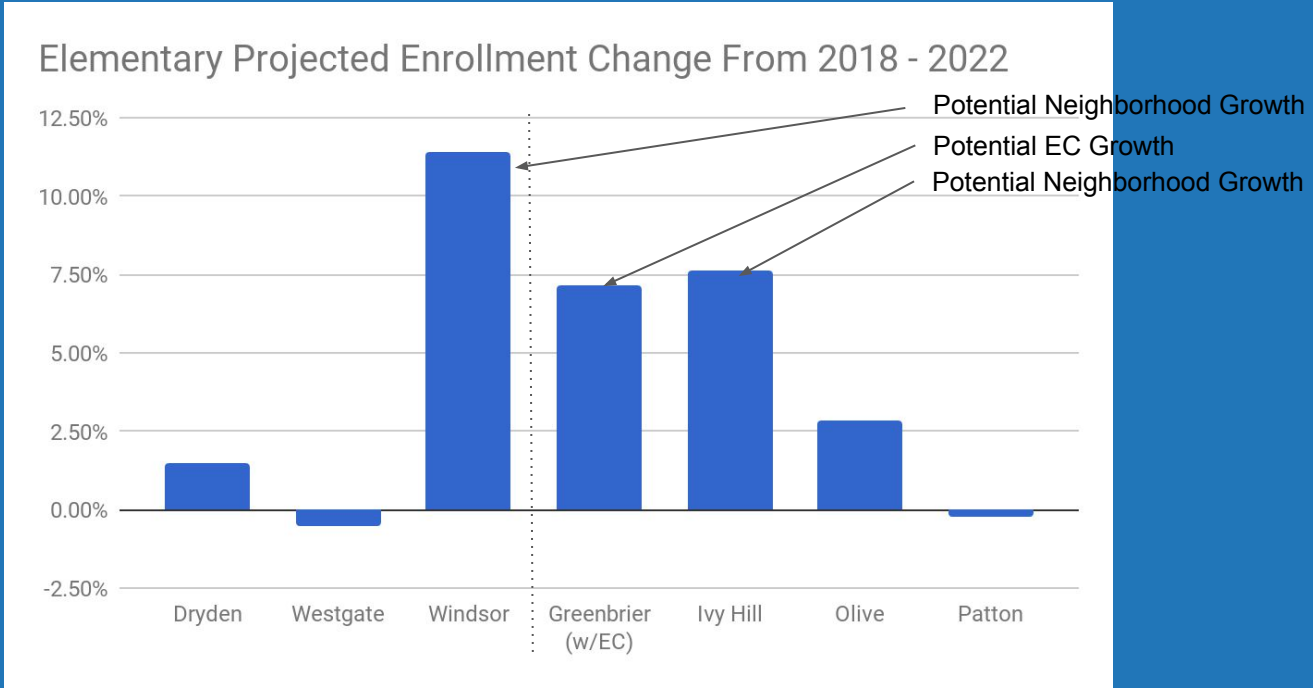


# Demographics

## District Gross Square Footage per Student



# Demographics

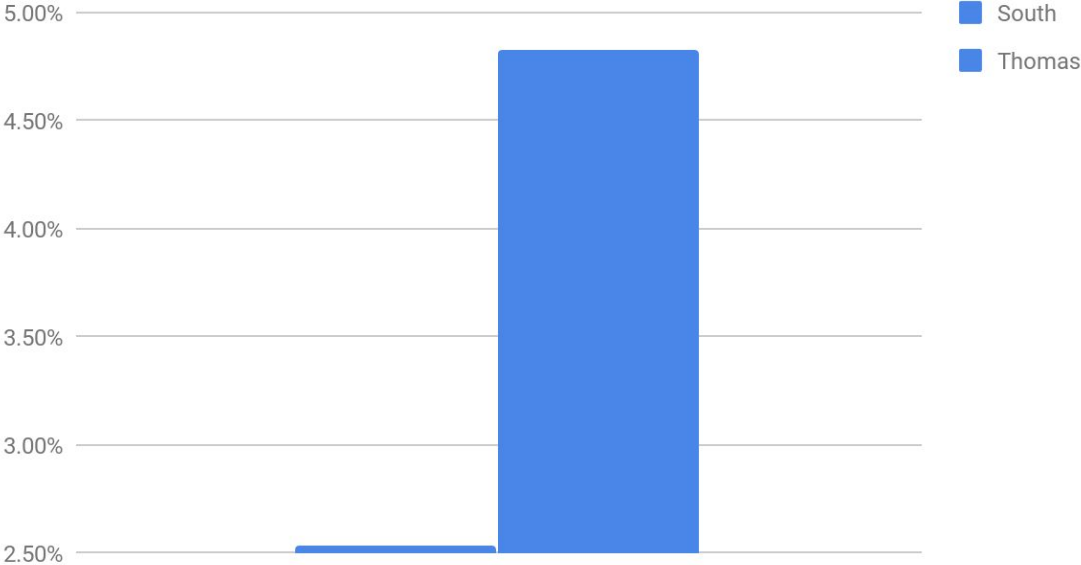


Dryden	Westgate	Windsor	Greenbrier (w/EC)	Ivy Hill	Olive	Patton
1.47%	-0.50%	11.42%	7.18%	7.60%	2.87%	-0.23%



# Demographics

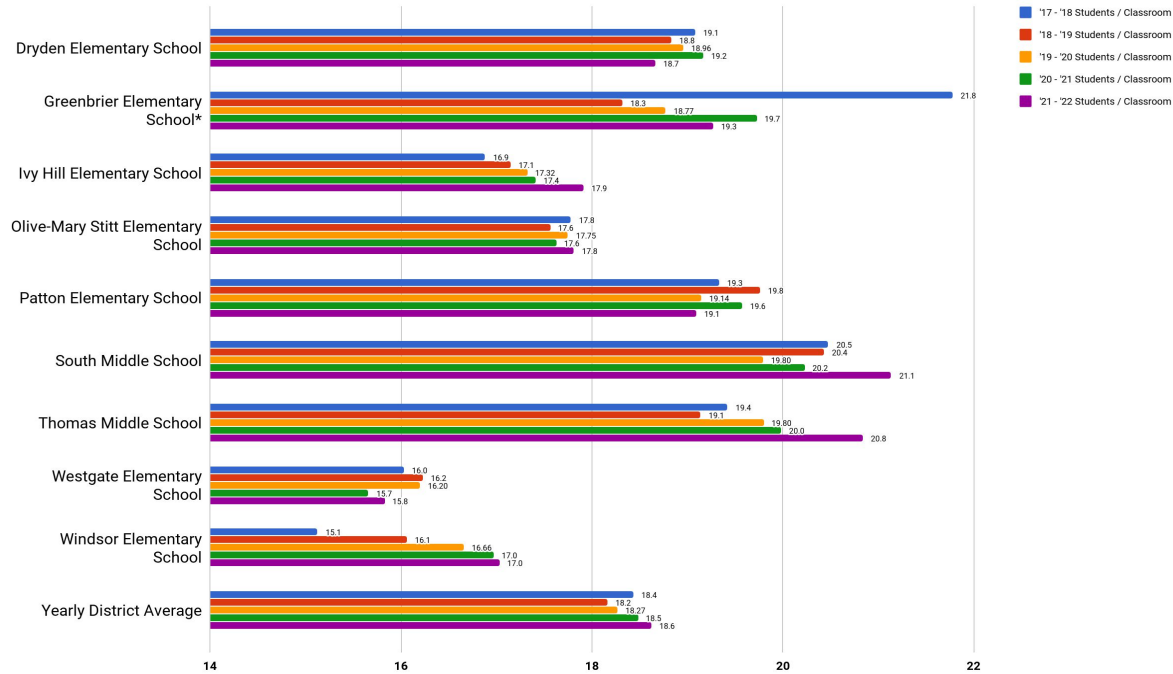
### Middle School Projected Enrollment Change from 2018 - 2022



South	Thomas
2.54%	4.83%

# Facilities

## Students / Available Classrooms

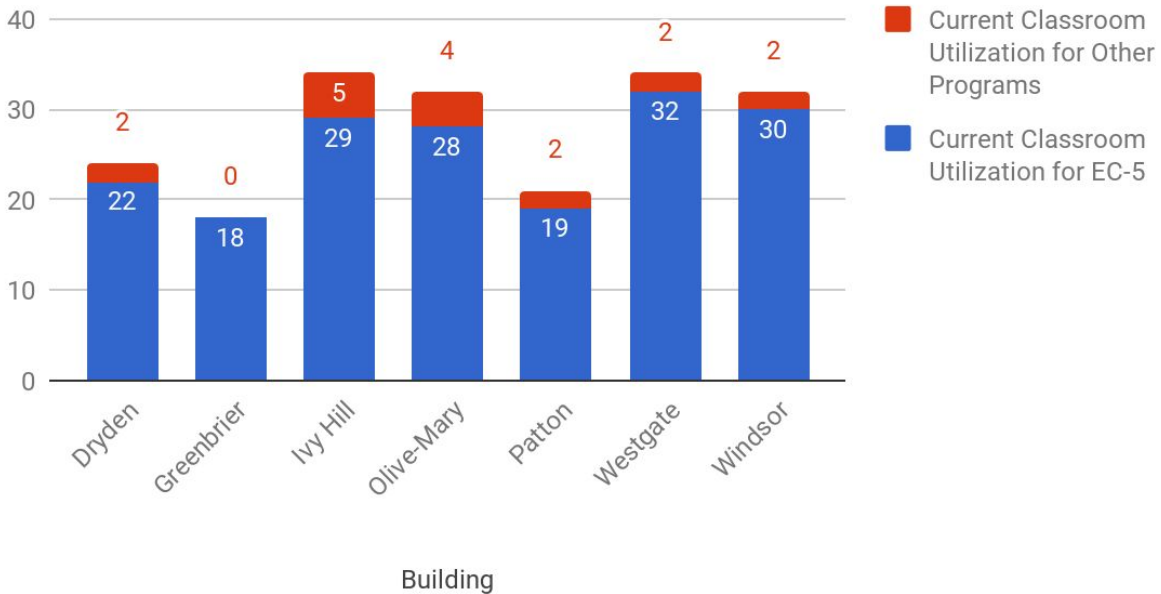


## Classroom Counts

Building	2017-18 Classrooms	2018-19 Classrooms
Dryden Elementary School	24	24
Greenbrier Elementary School*	18	22
Ivy Hill Elementary School	34	34
Olive-Mary Stitt Elementary School	32	32
Patton Elementary School	21	21
South Middle School	44	44
Thomas Middle School	50	50
Westgate Elementary School	34	34
Windsor Elementary School	32	32

# Facilities

## Current Classroom Utilization for EC-5 and Current Classroom Utilization for Other Programs



# Facilities

## District Space Usage Inventory

Buildings / [AHS\\_D\\_Thomas Middle School](#) / [AHS\\_D\\_Thomas ES\\_Level 1.pdf](#) CURRENT VIEW

110 - [Rename](#) [Copy](#) [Move](#) [Delete](#)  
Pin Type (Room): [Room/Unit](#)  
[View Work Orders and Notes](#)

**Name**  
Commons

**Type**  
General Use Facilities

**Space Category**  
Assembly

**Grade Level**  
N/A

**Subject or Use**  
Commons

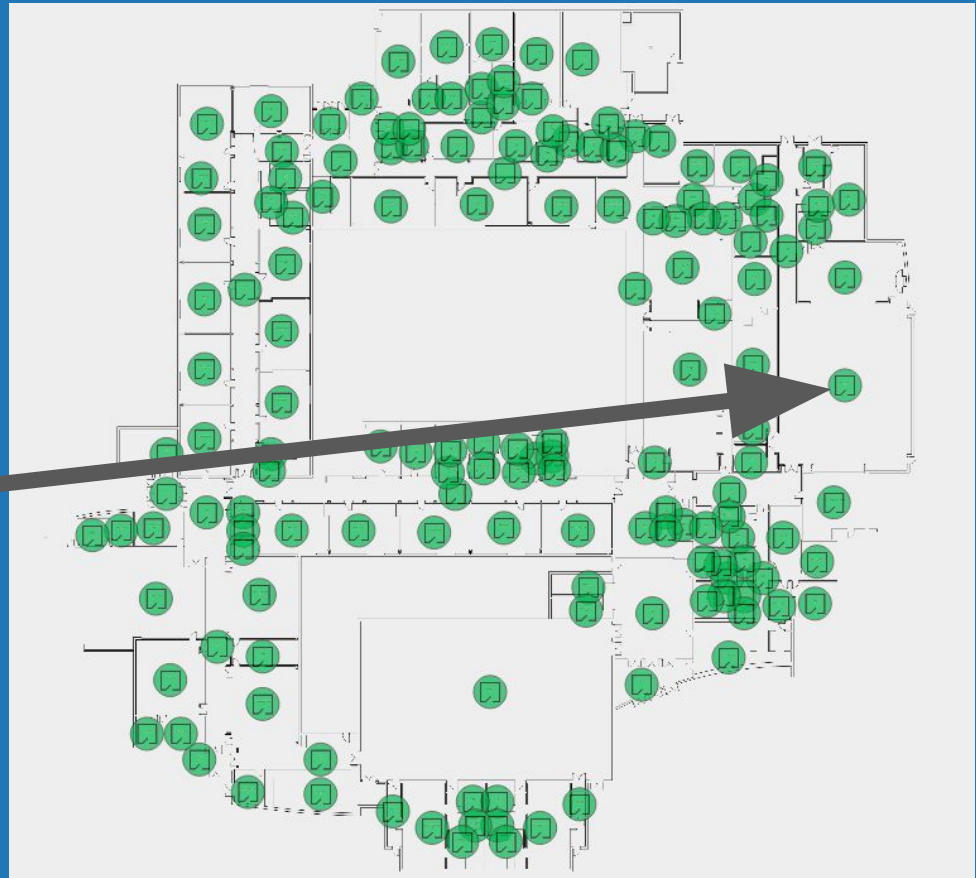
**Occupant**  
Enter Occupant here

**Square Feet**  
4591

**Floor Type**  
Tile-W/Finish

**Flooring Condition Assessment**

**Custodian**  
Enter Custodian here

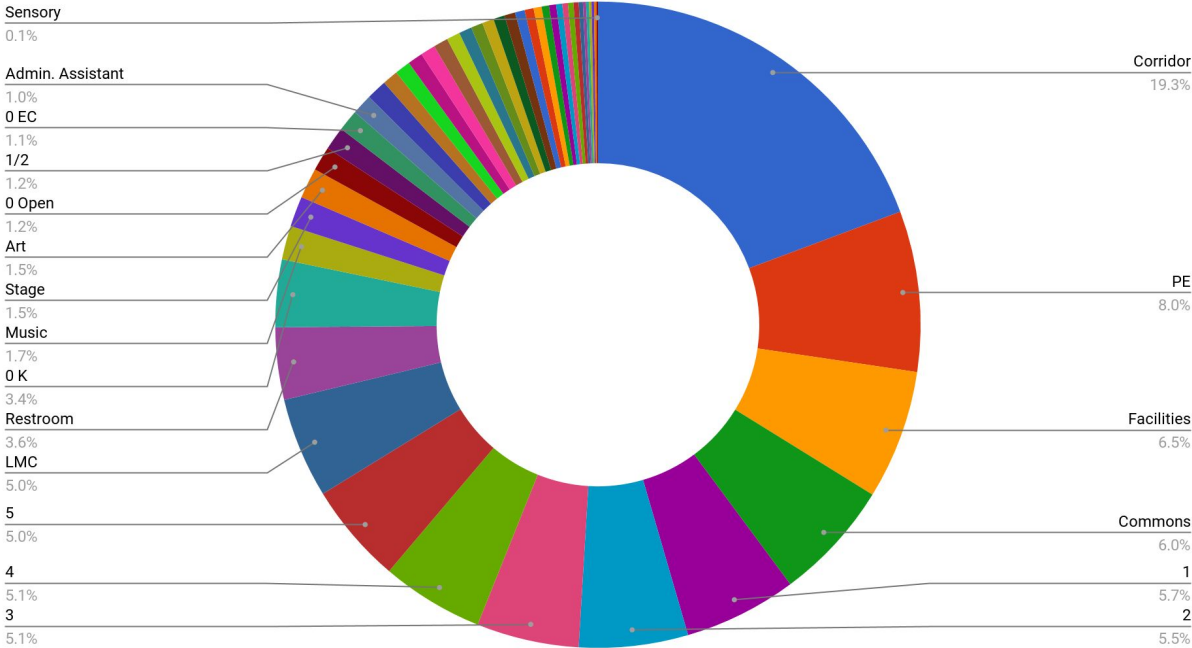


# Programs and Space Use - Elementary Schools

- EC
- K
- Open
- 1
- 1/2
- 2
- 3
- 3/4
- 4
- 5
- A.L.F.
- Admin. Assistant
- Art
- Assistant Principal
- Band
- Break Room
- CAP
- Commons
- Conference Room
- Corridor
- E.L.L
- Elevator
- Facilities (Storage, Mechanical, Custodial, etc)
- Food Service
- LMC
- Literacy
- Math
- Music
- Nurse
- OT
- PE
- PT
- PT/OT
- PTA
- Principal
- Psychologist
- Resource
- Restroom
- Social Worker
- Speech
- Stage
- Student Services
- Tech25
- Work Room

# Programs and Space Use - Elementary Schools

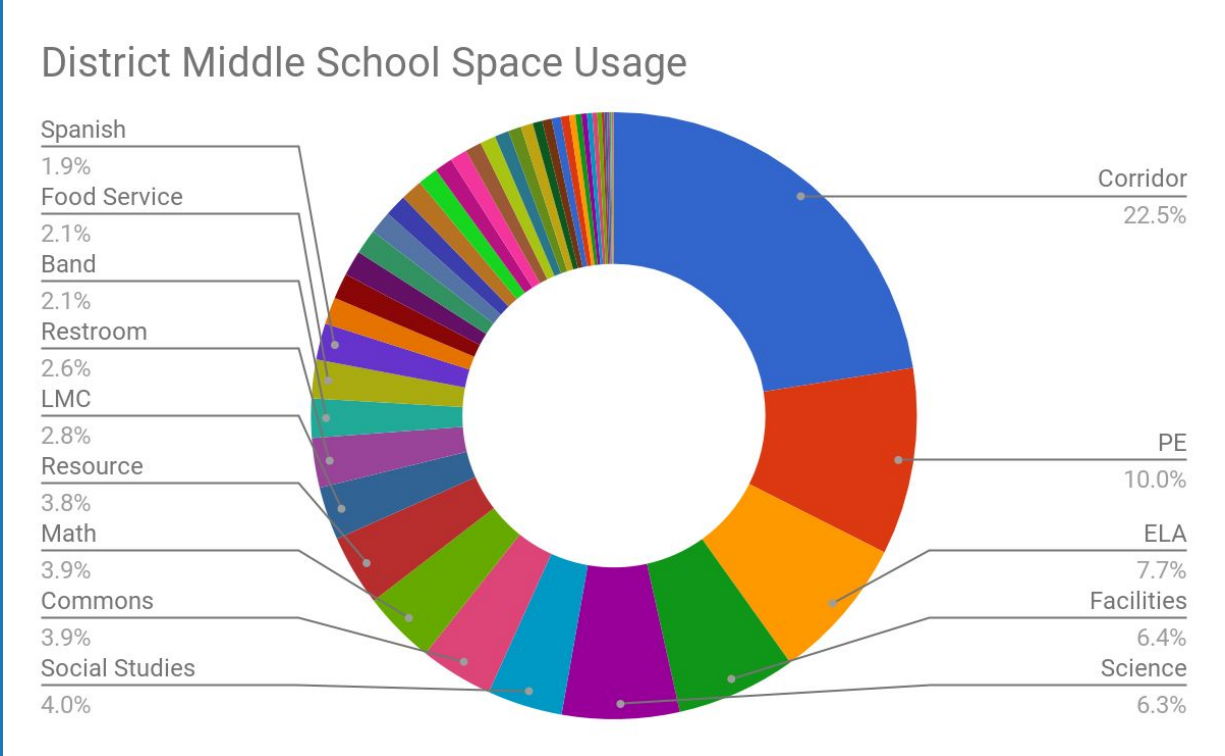
District Elementary Overall Space Usage



# Programs and Space Use - Middle Schools

- ALA
- ALF
- Admin Assistant
- Art
- Assistant Principal
- Band
- Break Room
- CMA
- Commons
- Conference Room
- Corridor
- DAD
- Drama
- ELA
- ER
- Elevator
- Facilities
- Fitness Center
- Food Service
- French
- Health
- Individualized Learning
- Italian
- LMC
- Literacy
- Locker Room
- Math
- Music
- Nurse
- PE
- Physical Therapist
- Principal
- Psychologist
- Reading
- Resource
- Restroom
- STEM
- Science
- Showers
- Social Studies
- Social Worker
- Spanish
- Speech
- Stage
- Tech25
- Technology
- Work Room

# Programs and Space Use - Middle Schools





# Program Changes Through 2022

Added Space Needs (+)

Reduced Space Needs (-)

**No Major Changes Projected at this Time**